



12407 Mukilteo Speedway, Ste. 130, Lynnwood, WA 98087
 Phone: (800) 438-4026 Fax: (877) 721-6107
 info@amkspeakers.com www.amkspeakers.com

AMK Commercial Series

QSA 802

Self Amplified 8" Coaxial Loudspeaker Assembly
 1 self amplified speaker with 3 companions



The **AMK QSA802** powered speakers feature a 30 watt Class D digital design amplifier, with > 75% efficiency for the main speaker. These units are available as single master speakers or sets with an unpowered companion speaker (**QSA802-P**) The speaker combines high performance, power handling, and a very smooth response.

The 4 speaker set is generally used for board rooms and higher education classrooms where more sound coverage is needed. The dispersion and power handling characteristics of AMK speakers requires less amount of speakers needed for sound coverage of the room.

The loudspeaker driver, CX802, is one of the few transducers in the commercial sound industry that produces and meets the standards of recording studio.

Excellent dispersion, wide bandwidth, and a smooth frequency response make this the top choice for today's overhead commercial applications.

There are wide ranges of the application for this unit, especially in educational markets and corporate boardrooms where direct input of the signal from the processor is desired (i.e., projectors, laptops, or any line level device)

Features:

- * All metal construction, including baffle
- * High performance 6½" coaxial loudspeaker with wide dispersion
- * Self powered with 20 watt Class D amplifier
- * **UL Listed (UL 1480, UL 2043) PK-213-8QM Enclosure**

Innovative Features

Each system includes a renowned AMK Coaxial loudspeaker like those already installed in hundreds of locations

Easy to install

- All-metal swivel mounting system allows standard installation of speakers without having to align the enclosure to the tile bridge
- This installation procedure is quick and unique to the industry
- Architecturally pleasing white perforated metal grille that uses a unique metal spring system for a "no visible hardware finished look and the ease of a "snap on" installation

Safety

- The use of all-metal attachment parts makes for an overall safer installation
- All-metal swivel prevents breakage of swivel during installation
- All-metal swivel mounting system is not easily compromised by fire

Sound

- The plenum compatible back enclosure is designed to maximize the performance of this studio quality speaker

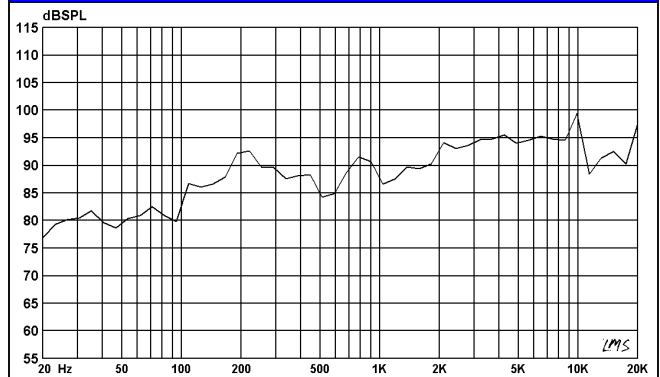
Specifications

Frequency Response	55 Hz - 20 kHz
Voice-coil diameter	1"
Average Beamwidth @ 2 kHz	110 deg.
Magnet Weight	20 oz
Magnet Material	Barium Ferrite
Tweeter	13mm Polyamide Soft Dome
Woofer Cone	Polypropylene
Surround Material	Inverted Rubber
Crossover Frequency	5.5 kHz
Depth of the Enclosure	7 in.
Diameter of the Grille	12.75 in.
Enclosure Mounting	Metal Swivel Clamp

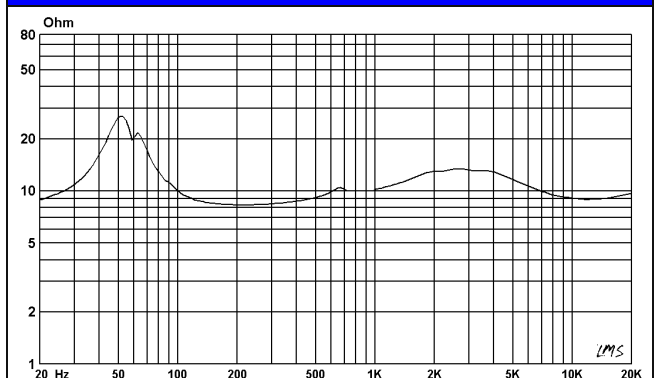
Amplifier Specifications

Amplification	30 watt Class D design amplifier
Amplifier Efficiency	> 75%
Total Harmonic Distortion	< 0.2%
Signal to Noise Ratio	>95dB
Protection	Protected as to short circuit to supply and ground, as well as minimum current
Controls	Input potentiometer level adjustment

FREQUENCY RESPONSE



IMPEDANCE CURVE



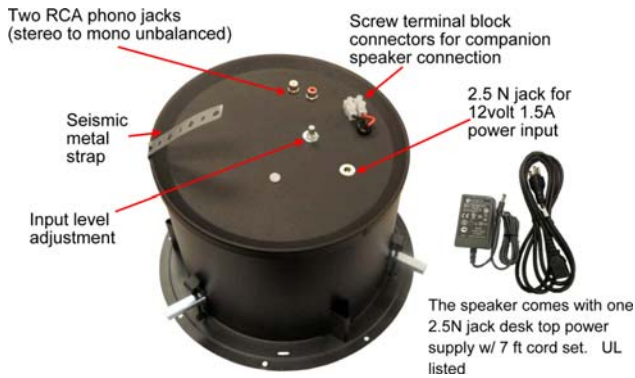
MODEL OPTIONS

Model	Power Supply	Power Connection	Input Connection	Signal Input	Slave input/output connections
QSA802-SM	External 24Volt	2.5mm N jack	Two RCA phono jacks	Stereo to Mono unbalanced	Screw terminal block connectors
Added Suffixes: QSA802-SM-P (Set of Powered and Companion Speaker) QSA802-SM-RVC (Powered speaker with the remote control) QSA802-SM-RVC-P (Set of powered speaker with the remote control and a companion speaker)					
QSA802-OM	External 24Volt	2.5mm N jack	One RCA phono jack	One unbalanced Input	Screw terminal block connectors
Added Suffixes: QSA802-OM-P (Set of Powered and Companion Speaker) QSA802-OM-RVC (Powered speaker with the remote control) QSA802-OM-RVC-P (Set of powered speaker with the remote control and a companion speaker)					
QSA802-RPS	External 24Volt w/ Screw Terminal	3.81mm two position Phoenix type connector	Two RCA phono jacks	Stereo to Mono unbalanced	Screw terminal block connectors
Added Suffixes: QSA802-RPS-P (Set of Powered and Companion Speaker) QSA802-RPS-RVC (Powered speaker with the remote control) QSA802-RPS-RVC-P (Set of powered speaker with the remote control and a companion speaker)					
QSA802-RPM	External 24Volt w/ Screw Terminal	3.81mm two position Phoenix type connector	One RCA phono jack	One unbalanced Input	Screw terminal block connectors
Added Suffixes: QSA802-RPM-P (Set of Powered and Companion Speaker) QSA802-RPM-RVC (Powered speaker with the remote control) QSA802-RPM-RVC-P (Set of powered speaker with the remote control and a companion speaker)					
QSA802-MD	External 24Volt w/ Screw Terminal	3.81mm two position Phoenix type connector	3.5mm Mini jacks	Stereo to Mono unbalanced	Screw terminal block connectors
Added Suffixes: QSA802-MD-P (Set of Powered and Companion Speaker) QSA802-MD-RVC (Powered speaker with the remote control) QSA802-MD-RVC-P (Set of powered speaker with the remote control and a companion speaker)					
QSA802-MD2	External 24Volt w/ Screw Terminal	3.81mm two position Phoenix type connector	Two 3.5mm Mini jacks	Stereo to Mono unbalanced	Screw terminal block connectors
Added Suffixes: QSA802-MD2-P (Set of Powered and Companion Speaker) QSA802-MD2-RVC (Powered speaker with the remote control) QSA802-MD2-RVC-P (Set of powered speaker with the remote control and a companion speaker)					
QSA802-RPM	12 Volt for external higher amperage multi unit supply (User option for power source)	3.81mm two position Phoenix type connector	One RCA phono jack	One unbalanced Input	Screw terminal block connectors
Added Suffixes: QSA802-RPM-P (Set of Powered and Companion Speaker) QSA802-RPM-RVC (Powered speaker with the remote control) QSA802-RPM-RVC-P (Set of powered speaker with the remote control and a companion speaker)					
QSA802-JFS	External 24Volt	2.5mm N jack	3.81mm four position Phoenix type connector	Stereo to Mono unbalanced	Screw terminal block connectors
Added Suffixes: QSA802-JFS-P (Set of Powered and Companion Speaker) QSA802-JFS-RVC (Powered speaker with the remote control) QSA802-JFS-RVC-P (Set of powered speaker with the remote control and a companion speaker)					
QSA802-JFM	External 24Volt	2.5mm N jack	3.81mm three position Phoenix type connector	One balanced Input	Screw terminal block connectors
Added Suffixes: QSA802-JFM-P (Set of Powered and Companion Speaker) QSA802-JFM-RVC (Powered speaker with the remote control) QSA802-JFM-RVC-P (Set of powered speaker with the remote control and a companion speaker)					
QSA802-CFS	External 24Volt w/ Screw Terminal	3.81mm two position Phoenix type connector	3.81mm four position Phoenix type connector	Stereo to Mono unbalanced	Screw terminal block connectors
Added Suffixes: QSA802-CFS-P (Set of Powered and Companion Speaker) QSA802-CFS-RVC (Powered speaker with the remote control) QSA802-CFS-RVC-P (Set of powered speaker with the remote control and a companion speaker)					
QSA802-CFM	External 24Volt w/ Screw Terminal	3.81mm two position Phoenix type connector	3.81mm three position Phoenix type connector	One balanced Input	Screw terminal block connectors
Added Suffixes: QSA802-CFM-P (Set of Powered and Companion Speaker) QSA802-CFM-RVC (Powered speaker with the remote control) QSA802-CFM-RVC-P (Set of powered speaker with the remote control and a companion speaker)					
QSA802-CFM-2	External 24Volt w/ Screw Terminal	3.81mm two position Phoenix type connectors	(2) 3.81mm three position Phoenix type connector	Two balanced Inputs	Screw terminal block connectors
Added Suffixes: QSA802-CFM-2-P (Set of Powered and Companion Speaker) QSA802-CFM-2-RVC (Powered speaker with the remote control) QSA802-CFM-2-RVC-P (Set of powered speaker with the remote control and a companion speaker)					
QSA802-CFM-4	External 24Volt w/ Screw Terminal	3.81mm two position Phoenix type connectors	(4) 3.81mm three position Phoenix type connector	Four balanced Inputs	Screw terminal block connectors
Added Suffixes: QSA802-CFM-4-P (Set of Powered and Companion Speaker) QSA802-CFM-4-RVC (Powered speaker with the remote control) QSA802-CFM-4-RVC-P (Set of powered speaker with the remote control and a companion speaker)					

MODEL OPTION CONFIGURATIONS

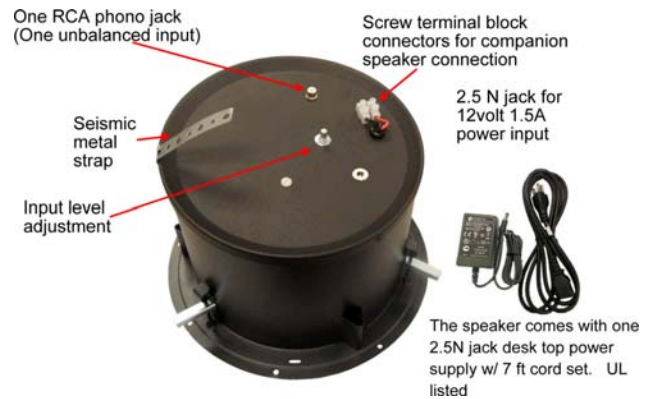
QSA802-SM

Stereo to mono unbalanced



QSA802-OM

One unbalanced input



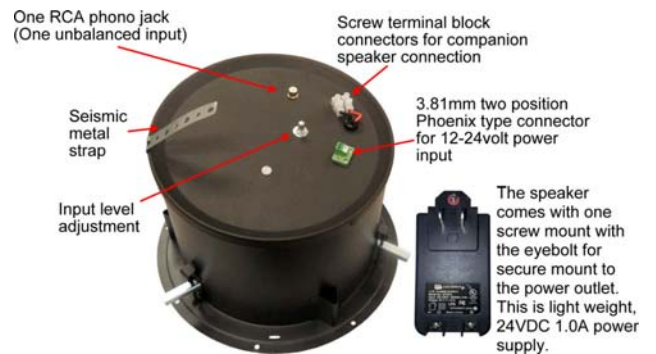
QSA802-RPS

Stereo to mono unbalanced



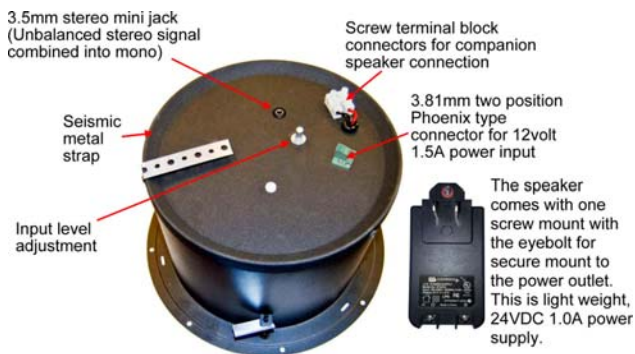
QSA802-RPM

One unbalanced input



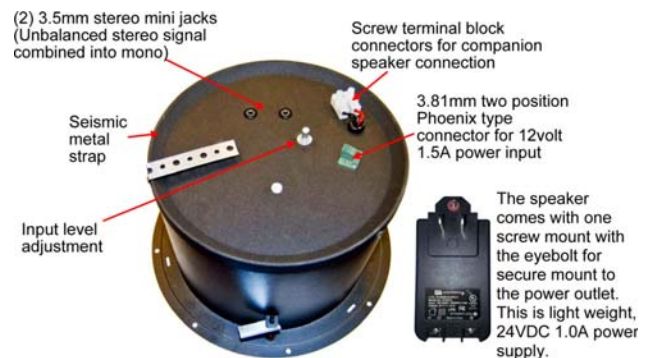
QSA802-MD

Stereo to mono unbalanced



QSA802-MD2

Stereo to mono unbalanced



MODEL OPTION CONFIGURATIONS

(For powered unit)

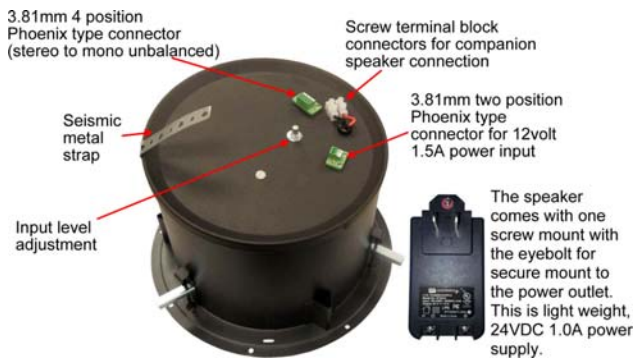
QSA802-JFS Stereo to Mono unbalanced



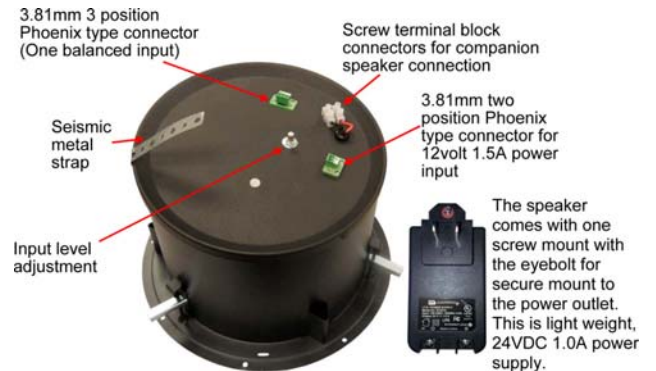
QSA802-JFM One balanced input



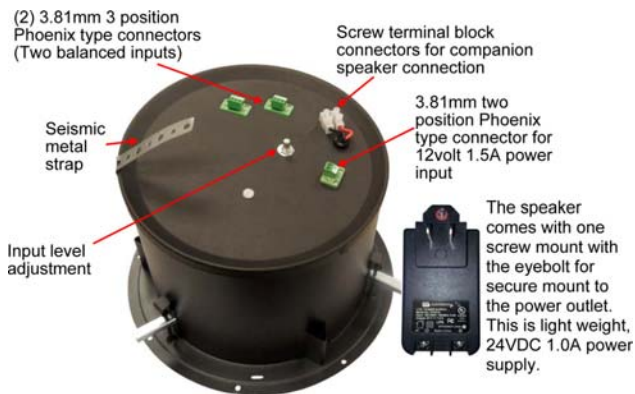
QSA802-CFS Stereo to Mono unbalanced



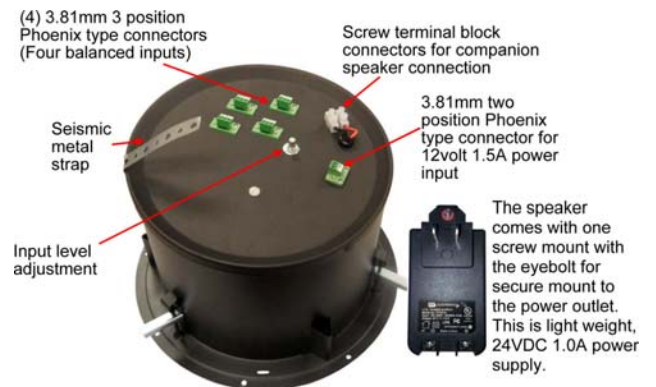
QSA802-CFM One balanced input



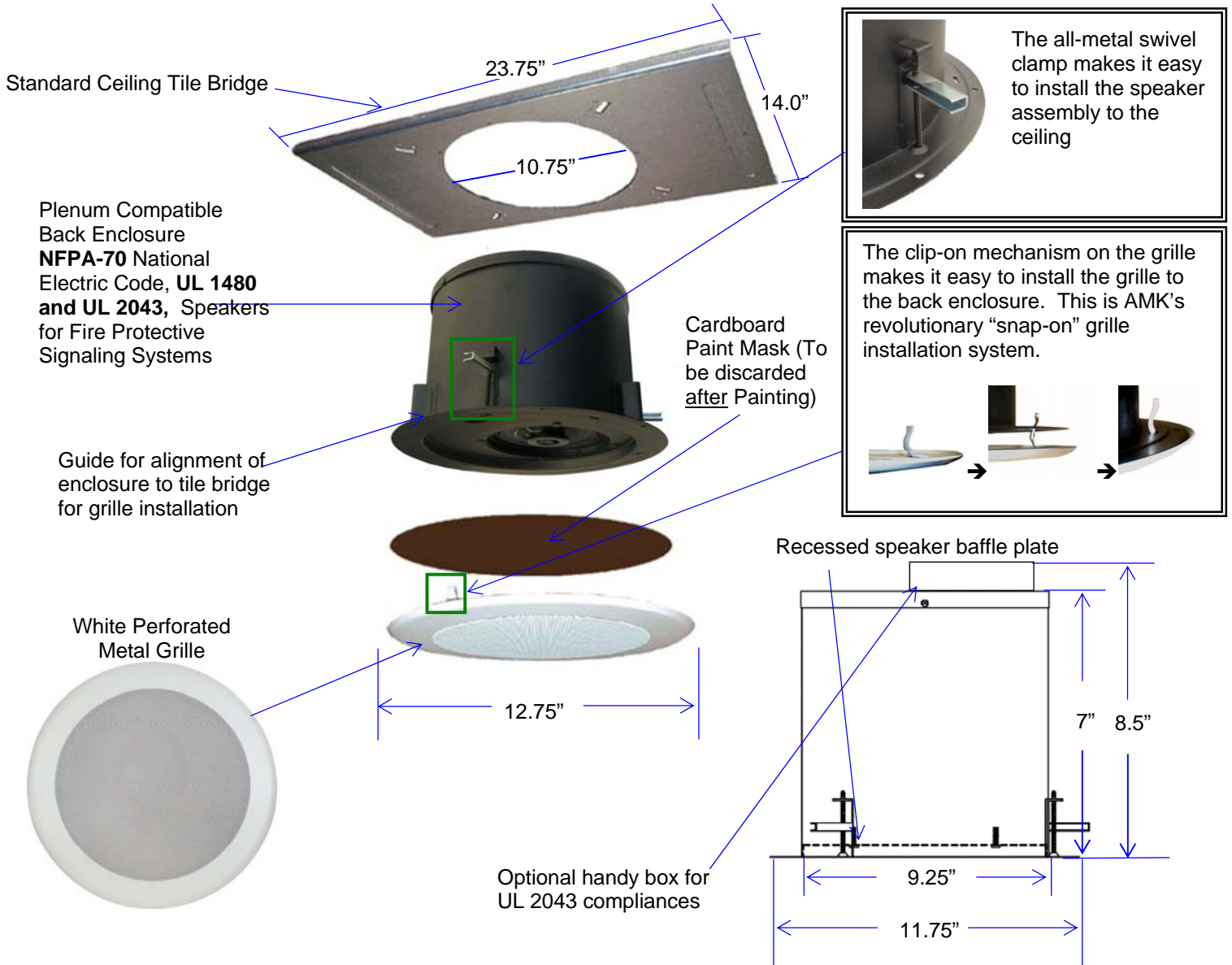
QSA802-CFM Two balanced inputs



QSA802-CFM-4 Four balanced inputs



PSA 802 ILLUSTRATION



Power Supplies



For use with PSA802-SM, PSA802-OM, PSA802-JFS, PSA802-JFM

For use with PSA802-CFS, PSA802-CFM, PSA802-RPS, PSA802-RPM

Polar Responses

Architect's & Engineer's Specifications

The powered loudspeaker system shall be **AMK QSA 802(-_____)**. The speaker shall feature a 30watt Class D design amplifier, with >75% efficiency for the speaker. The powered speaker assembly in the system shall be of the coaxial type with an 8" woofer of polypropylene, an inverted rubber surround, and a 1" polyamide soft dome tweeter mounted on a post. The loudspeaker system shall have a white metal round grille that screws into the rim of the mounting enclosure. The system shall have input potentiometer for level adjustment.

The powered speaker systems shall be one amplified speaker with three companion speakers.

The transducer in the loudspeaker system shall be AMK CX 802 coaxial loudspeaker. The woofer shall have a 20 oz. Barium Ferrite magnet. The two reproducer sections shall be coupled through a built-in capacitor bypass crossover. The crossover frequency shall be at 5.5 kHz. The low frequency reproducer shall have 1" (25.4mm) voice coil and the high frequency reproducer shall have 0.51" (13mm) voice coil.

The system shall have a frequency response of 55 Hz- 20 kHz (+/- 5dB). The power handling shall be 40watts at 8 ohm impedance. The sensitivity shall be 91dB at 1watt / 1meter.

The depth of the enclosures shall be 7 inches. The rim diameter shall be 11.75". The enclosure diameter shall be 9.25". The depth of the enclosures shall not exceed 11.75". The system shall include a tile bridges. The system shall have a metal strap for attachment to the structure for seismic protection.

The total weight of the each unit system shall not exceed 10.0 lbs.

The loudspeaker system shall be AMK Innovations model **PSA 802(-_____)**.

Conforms to EIA Standards: RS-276-A, RS-278-B, RS-426-A

