



# PCS615-RPS-W

Self Amplified Wall Mount Speaker System



The **AMK PCS615-RPS-W** is a self amplified cabinet speaker system. It features a 40 watt Class D digital design amplifier, with > 75% efficiency and one of AMK's world class coaxial drivers. The CX602 speaker, a full range, low distortion, transducer is one of only a few that, though designed for overhead applications in the commercial sound industry, produces audio quality that is equally at home in the demanding world of extended sound fields and recording studios as well.

Excellent dispersion, wide bandwidth, and a smooth frequency response make this the top choice for cabinet as well as overhead commercial applications.

There are wide ranges of applications of this unit including extending the sound field to where ceiling speakers are not appropriate or desired, These applications also include educational markets and corporate boardrooms where direct input of the signal from a is desired i.e. projector or mobile audio source.

## Transducer Specifications

<b>Frequency Response</b>	65 Hz - 20 kHz
<b>Voice-coil diameter</b>	1"
<b>Average Beamwidth @ 2 kHz</b>	144 deg.
<b>Magnet Weight</b>	13 oz
<b>Magnet Material</b>	Barium Ferrite
<b>Tweeter</b>	13mm Polyamide Soft Dome
<b>Woofer Cone</b>	Polypropylene
<b>Surround Material</b>	Inverted Rubber
<b>Crossover Frequency</b>	6.3 kHz

## Enclosure Specifications

(Enclosure listed under <b>UL 94</b> )	
<b>Enclosure</b>	Acrylonitrile Butadiene Styrene (ABS)
<b>Height</b>	12"
<b>Width</b>	9"
<b>Depth</b>	7"
<b>Bracket</b>	Metal U bracket with screw knob on the side and electro welded insert for omni mount on rear plane.
<b>Grille</b>	Perforated Metal
<b>Enclosure Color</b>	White

## Amplifier Specifications

<b>Amplification</b>	40 watt Class D design amplifier
<b>Amplifier Efficiency</b>	> 75%
<b>Total Harmonic Distortion</b>	< 0.2%
<b>Signal to Noise Ratio</b>	>95dBv
<b>Protection</b>	Short circuit to supply and ground, as well as under current
<b>Controls</b>	Input potentiometer level adjustment

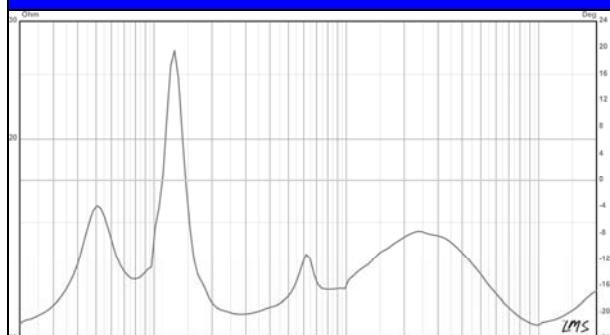
## FEATURES

- \* Plastic Enclosure Type with perforated metal grill
- \* High performance 6½" coaxial loudspeaker with wide dispersion
- \* Very high performance 40 watt digital amplifier
- \* Wide choice of input and control configurations
- \* Speaker ships with U bracket, omni directional bracket is available at nominal amount.

## FREQUENCY RESPONSE



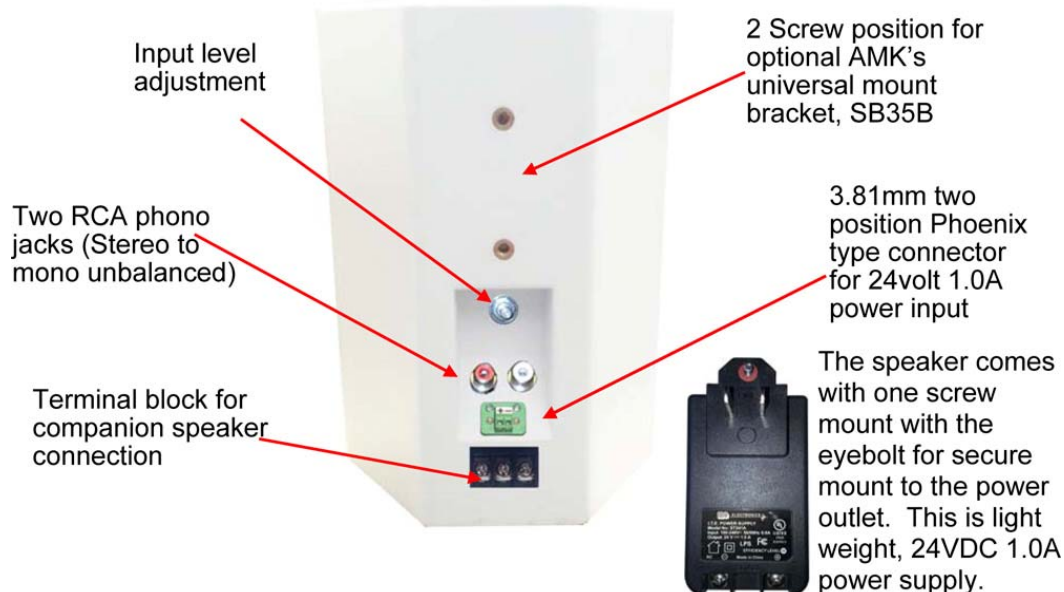
## IMPEDANCE CURVE



12407 Mukilteo Speedway, Ste. 130, Lynnwood, WA 98087

Phone: (425) 322-3170 Fax: (877) 721-6107 info@amkspeaker.com www.amkspeaker.com

## MODEL CONFIGURATION



Power Supply	Power Connection	Input Connection	Signal Input
External 24VDC 1.0A Screw Terminal	3.81mm two position Phoenix type connector	Two RCA phono jacks	Stereo to Mono Unbalanced

## MOUNTING OPTIONS



**The speakers comes with a U Brackett**

The plastic handle screw knob makes it a snap for installation.



**SB 35B**  
Optional Universal Mount Bracket

## Architect's & Engineer's Specifications

The powered loudspeaker system shall be **AMK PCS615-RPS-W**. The speaker shall feature a 15watt Class D design amplifier, with >75% efficiency within the speaker. The speaker driver assembly in the system shall be of the coaxial type with an 6.5" woofer of polypropylene, an inverted rubber surround, and a 1" polyamide soft dome, post mounted, tweeter.

The transducer in the loudspeaker system shall be AMK CX 602 coaxial loudspeaker. The woofer shall have a 13 oz. (369g) Barium Ferrite magnet. The two reproducer sections shall be coupled through a built-in capacitor bypass crossover. The crossover frequency shall be at 5.0 kHz. The low frequency reproducer shall have 1" (25.4mm) voice coil and the high frequency reproducer shall have 0.51" (13mm) voice coil.

The system shall have a frequency response of 65 Hz- 20 kHz (+/- 5dB). The power handling shall be 25watts at 8 ohm impedance. The sensitivity shall be 91dB at 1watt / 1meter.

The enclosure shall be constructed of high-impact ABS. The grille shall be completely powder coated for resistance against rusting, shall be bake-painted black.

The installation shall be done with U bracket provided with the cabinet with plastic knob screw on the side of the cabinet. Optional AMK SB-35 multi directional bracket may be used for installation as well.

The total weight of the unit system shall not exceed 7.0 lbs.

The loudspeaker system shall be AMK Innovations model **PCS615-RPS-W**.

**Conforms to EIA Standards: RS-276-A, RS-278-B, RS-426-A**